

Hardware Spec

PARAMETER	DETAIL
Weight (Lock only)	6 Lbs
Working Current	60 mA
Idle Current	15 μ A
Passage Time	5 Second
Working Voltage	4.8-6.4V
Low Battery Warning	4.8V
Power Source	4 AA Alkaline Battery
Reader	Ibutton, or iButton Keypad
Handle	Field Reversible Lever
Door Thickness	1 3/8" to 1 3/4"
Strike Plate	ANSI Standard 115.3. 1-1/8 x 2-3/4 inch T strike with 1-1/4 lip-to-center dimension.
Latch	Cylindrical. 2 3/4 inch backset standard (2 3/8 inch backset optional), solid brass with 1/2 inch throw. 1-inch diameter bore is required.
Keyway	SC4 6Pin, SFIC optional

LOCK Front / Back



E-II-TM



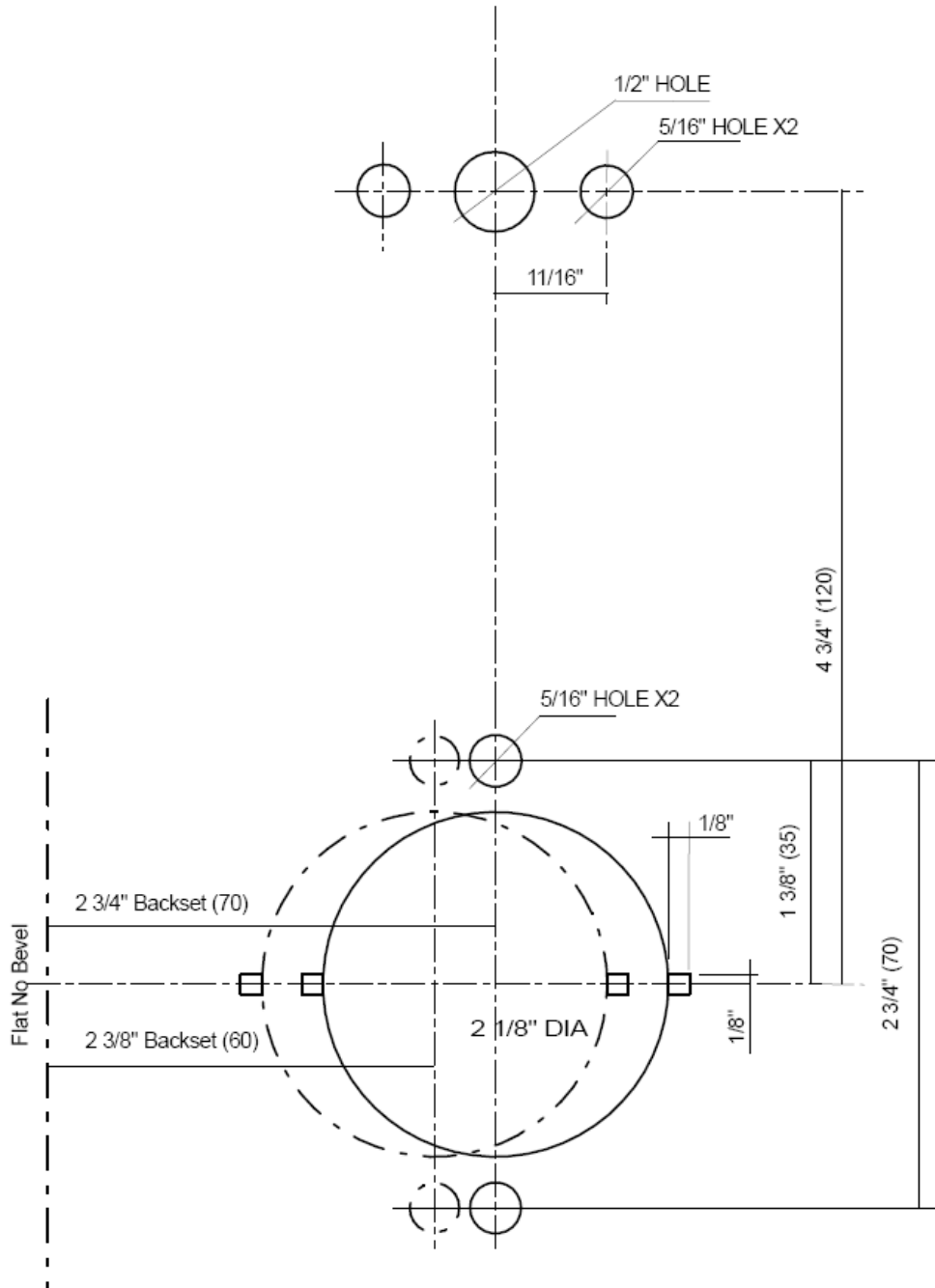
E-II-TK

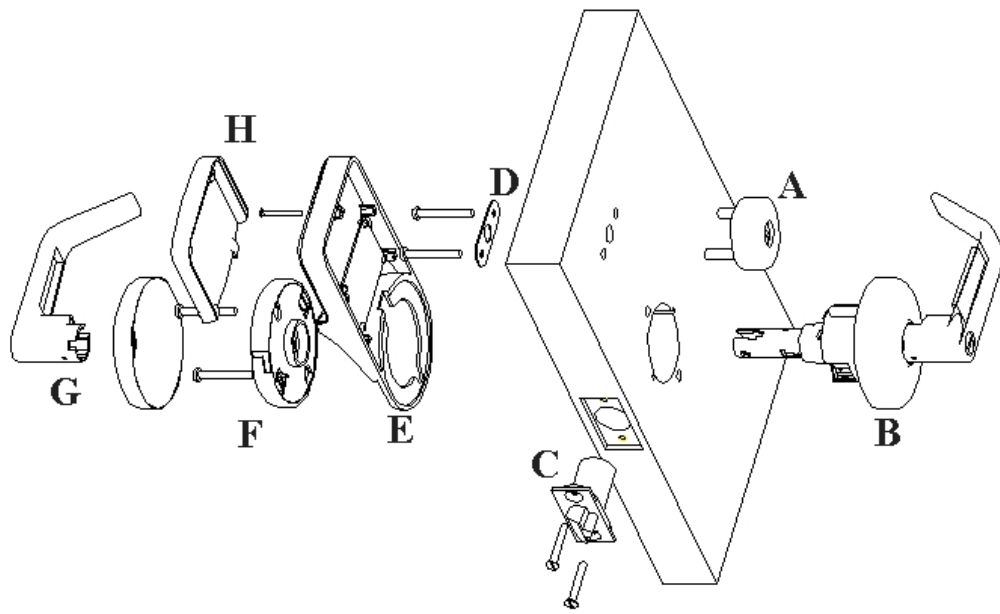
Software Spec

Description	Software
Audit Trail	4,000
Users	800
Timed Operation	Yes
Remote Access	Yes
Storehouse/Classroom Mode	Yes
Software Package	TM-iKeypad Software TM+Keypad: E4 Software
Lock from Inside	Yes
Daylight Saving	Yes
Set Up Method	Software



Eternity-II Installation Guide





- A.** iButton Reader or iButton+Keypad
- B.** Front Handle Set
- C.** Latch
- D.** Battery Case Fixture
- E.** Battery Case
- F.** Back Set
- G.** Back Handle
- H.** Battery Case Cover

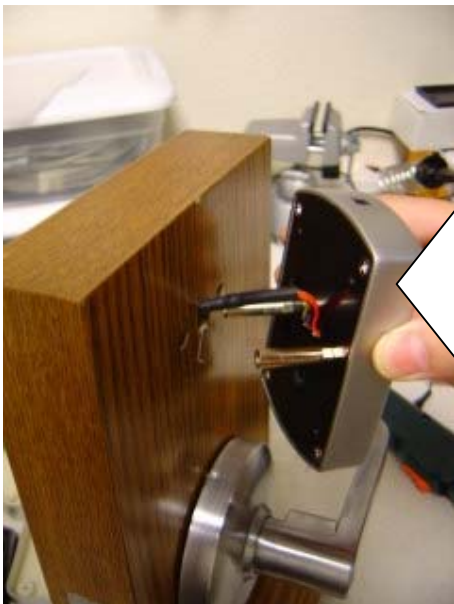
**Detail Step by Step (Keypad lock example. Use the same one to installation
ibutton reader)**



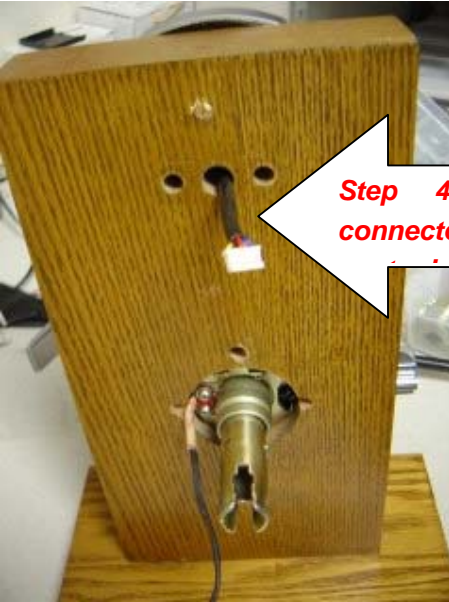
Step 1: Install latch



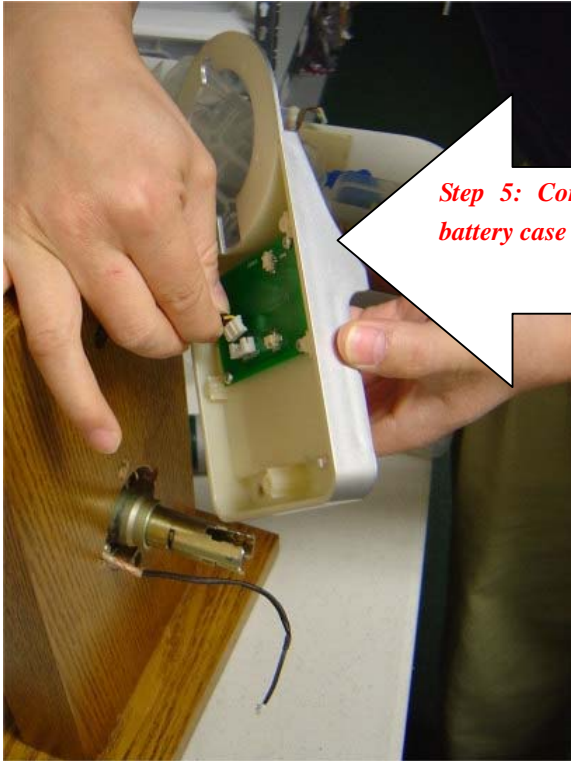
Step 2: Install the outside lock lever and lock chassis



Step 3: Insert Keypad Case, with extension screw installed

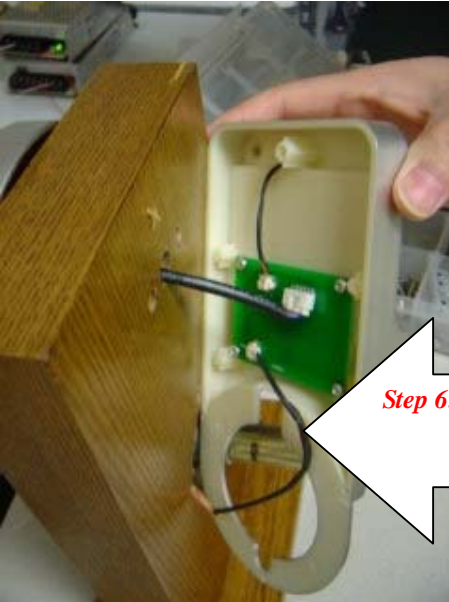


Step 4: Pull the keypad connector and wire through the



Step 5: Connect to battery case before hook the battery case in place





Step 6: Connect motor wire

7. Put battery holder in place, feed the motor wire through the space below the holder:



Step 7: Secure the battery case in place. Feed the motor wire through the space below the holder. No need any cutting on the door.

8. Install Inside Rose Insert: (Avoid to catch the wire when insert the top mounting screw.)



Step 8: Install Inside Rose Insert: (Avoid to catch the wire when insert the top mounting screw.)

9. Install the battery holder Mounting Screw:



Step 9: Install the battery holder Mounting Screw.